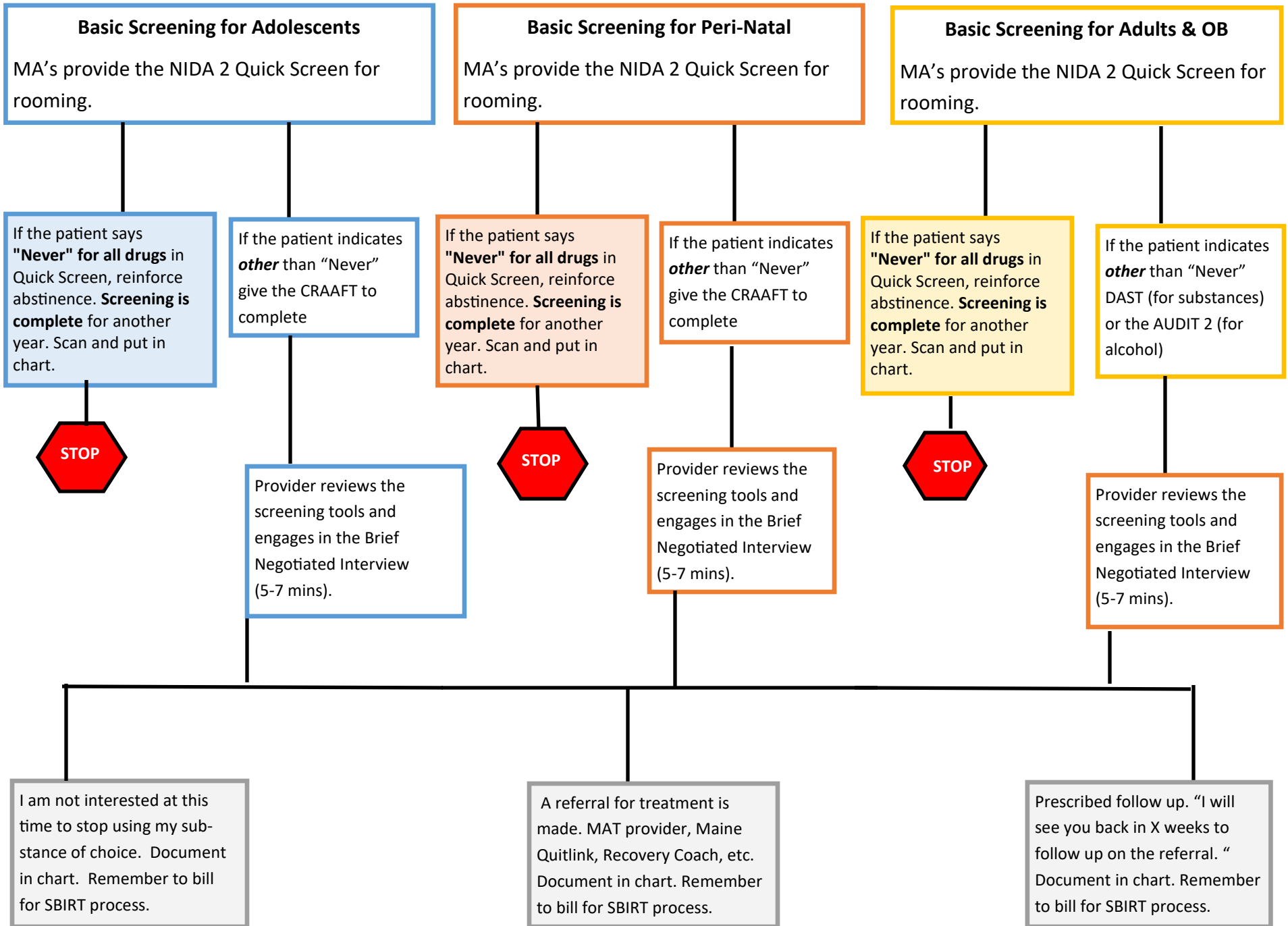


NIDA 2



NIDA 2

Commercial Insurance:

Code: CPT 99408

Description: Alcohol and /or substance use structure screening and a brief intervention services: 15—30 mins.

Fee Schedule: \$33.41

Code: CPT 99409

Description: Alcohol and /or substance use structure screening and a brief intervention services: >30 mins

Fee Schedule: \$65.51

Medicaid:

Code: G0396

Description: Alcohol and /or substance use structure screening and a brief intervention services: 15—30 mins

Fee Schedule: \$ 29.42

Code: G0397

Description: Alcohol and /or substance use structure screening and a brief intervention services: > 30 mins

Fee Schedule: \$ 57.69

Medicare:

Code: H0049

Description: Alcohol and /or drug screening .

Fee Schedule: \$24.00

Code: H0050

Description: Alcohol and /or drug screening, brief intervention per 15 mins

Fee Schedule: \$48.00

NIDA 2

In the past year, how often have you used the following?

Alcohol (for men: 5 or more drinks a day, for women: 4 or more drinks a day)

Never

Once or Twice

Monthly

Weekly

Daily or Almost Daily

Tobacco Products

Never

Once or Twice

Monthly

Weekly

Daily or Almost Daily

Prescription Drugs for Non-Medical Reasons

Never

Once or Twice

Monthly

Weekly

Daily or Almost Daily

Recreational Drugs

Never

Once or Twice

Monthly

Weekly

Daily or Almost Daily